



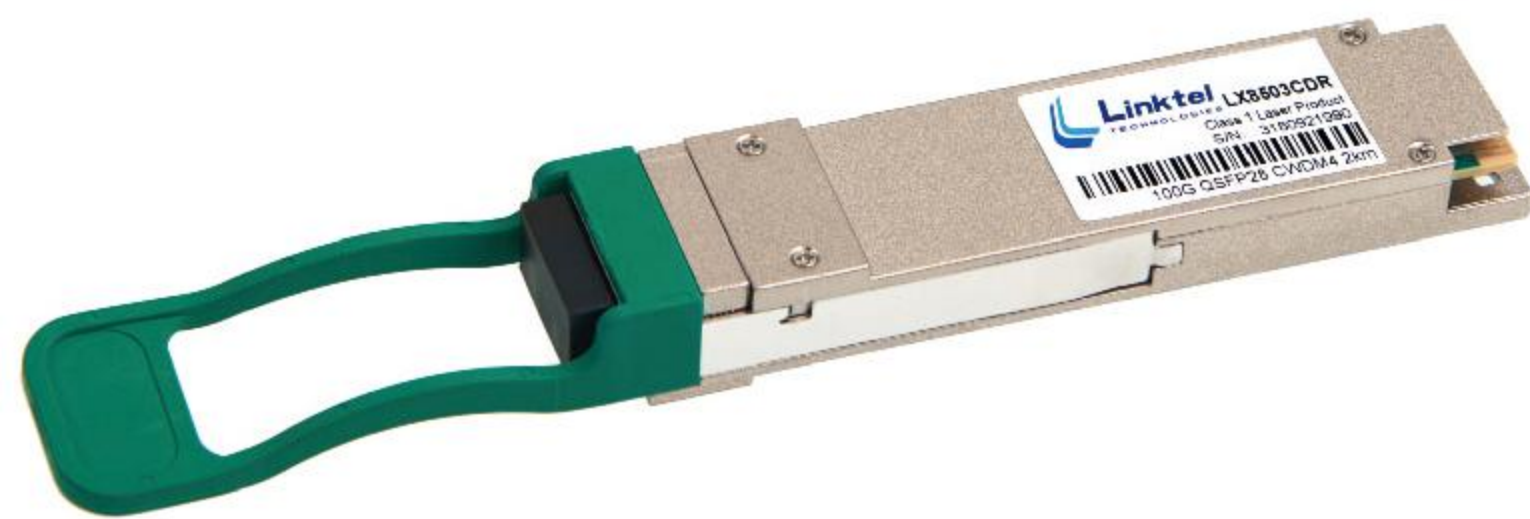
Scan this code to access our 100G product's website for more details

100G Optical Transceivers Family



Linktel's 100G optical transceivers include SR4, CWDM4, LR4 and PSM4 series. They use LC or MPO receptacles, with the features of IEEE802.3bm and SFF-8636 Compliant, MSA Compliant, Low Power Consumption, Small Size and High-speed. They are designed for applications of 100G Data Center Internal Network, Data Center Interconnection and Metro Network.

100G QSFP28 CWDM4



Feature

- 2km ; 10km
- 4 x 25Gb/s CWDM transmitter
- 4 channels PIN photo detector
- Power consumption: less than 3.5W
- Up to 2km/10km on SMF
- Single +3.3V power supply

Application

100GBASE-CWDM4 Ethernet links
Data Center

Products Selection

Part No.	Form Factor	Data Rate(Gb/s)	Reach	Wavelength	Transmitter	Receiver	Interface	Temperature	Application
LX8503CDR	QSFP28	103.1	2km	1271nm 1291nm 1311nm 1331nm	CWDM DFB	PIN	LC	0~70°C	100G BASE-CWDM4
LX8503CDL	QSFP28	103.1	10km	1271nm 1291nm 1311nm 1331nm	CWDM DFB	PIN	LC	0~70°C	100G BASE 4WDM-10

100G QSFP28 LR4



Feature

- 4 cooled 25Gb/s channels LAN WDM DFB TOSA
- 4 channels PIN photo detector
- Up to 10km on SMF
- Single +3.3V power supply
- Power consumption less than 3.5W (0~70°C) /4.5w(-40~85°C)

Application

100G Ethernet
Data Center

Products Selection

Part No.	Form Factor	Data Rate(Gb/s)	Reach	Wavelength	Transmitter	Receiver	Interface	Temperature	Application
LX8502CDR	QSFP28	103.1	10km	1295.56nm 1300.05nm 1304.58nm 1309.14nm	LAN WDM DFB	PIN	LC	0~70°C	100G BASE-LR4
LX8502CDS	QSFP28	103.1	2km	1295.56nm 1300.05nm 1304.58nm 1309.14nm	LAN WDM DFB	PIN	LC	0~70°C	100G BASE-LR4 Lite
LX8512CDR	QSFP28	103.1/112	10km	1295.56nm 1300.05nm 1304.58nm 1309.14nm	LAN WDM DFB	PIN	LC	0~70°C	OUT4/100G BASE-LR4
LX8502IDR	QSFP28	103.1	10km	1295.56nm 1300.05nm 1304.58nm 1309.14nm	LAN WDM DFB	PIN	LC	-40~85°C	100G BASE-LR4

100G Optical Transceivers Family

Linktel Headquarters China

No.20 University Science Park Road,
East-lake Hi-tech Development Zone, Wuhan, China
Tel:+86-27-59706329 Fax:+86-27-59706329 Email:sales@linkteltech.com

Linktel USA

1601 McCarthy Blvd #9, Milpitas, CA 95035, USA
Tel:+1 408 807 0482 Email:linktelus@linkteltech.com



100G QSFP28 SR4



Feature

Distance up to 300m on OM4 MMF
Low power consumption: less than 2W typically
Intelligent Auto-Negotiation supports for 100Gb/s and 40Gb/s
Multi Rates supported

Application

100G Ethernet
Data Center

Products Selection

Part No.	Form Factor	Data Rate(Gb/s)	Reach	Wavelength	Transmitter	Receiver	Interface	Temperature	Application
LX8501CDR	QSFP28	103.1	100m	850nm	VCSEL	PIN	MPO	0~70°C	100G BASE-SR4
LX8501CDL	QSFP28	103.1	300m	850nm	VCSEL	PIN	MPO	0~70°C	100G BASE-eSR4
LX8501CMR	QSFP28	103.1 / 41.2	100m	850nm	VCSEL	PIN	MPO	0~70°C	100G BASE-SR4/40G BASE-SR4

100G QSFP28 PSM4



Feature

500m ; 2km
4 Parallel lanes design with MPO-12 connector
Compliant with QSFP28 PSM4 MSA
4 channels 1310nm DFB laser and PIN photo detector
Commercial operating temperature: 0~70°C

Application

100GBASE Ethernet links
Data center

Products Selection

Part No.	Form Factor	Data Rate(Gb/s)	Reach	Wavelength	Transmitter	Receiver	Interface	Temperature	Application
LX8504CDR	QSFP28	103.1	500m	1310nm	DFB	PIN	MPO	0~70°C	100G PSM4
LX8504CDL	QSFP28	103.1	2km	1310nm	DFB	PIN	MPO	0~70°C	100G PSM4

100G QSFP28 AOC



Feature

Wide and diverse customizing
- Fiber Jacket color
- Cable length (up to 100m)
- Identification/Logo on cable
- Box package
- Temperature range
Support DDM function
Reliable VCSEL and PIN photonic devices
Commercial and Industrial operating temperature optional industrial operating temperature optional

Application

10G 25G 40G 100G Ethernet
Data Center
InfiniBand 12xQDR/FDR
Fibre Channel
SAS/SATA
PCIe

Products Selection

Part No.	Form Factor	Data Rate(Gb/s)	Reach	Wavelength	Transmitter	Receiver	Temperature	Application
LX597xCDR	QSFP28	103.1	1m,2m,3m,5m,10m,20m,30m,50m,100m	850nm	VCSEL	PIN	0~70°C	Datacenter, HPC, Core Routing
LX597xxDx	QSFP28	103.1	Other distances except above*	850nm	VCSEL	PIN	Other ranges °C*	Datacenter, HPC, Core Routing
LX598xCDR	QSFP28 to 4x SFP28	4x25.78	1m,2m,3m,5m,10m,20m,30m,50m,100m	850nm	VCSEL	PIN	0~70°C	Datacenter, HPC, Core Routing
LX598xxDx	QSFP28 to 4x SFP28	4x25.78	Other distances except above*	850nm	VCSEL	PIN	Other ranges °C*	Datacenter, HPC, Core Routing

WDM Transceivers (Tunable/CWDM/DWDM)

WDM Transceiver is one of Linktel's the best selling products with considerable market share. We offer a wide portfolio products for xWDM applications especially including tunable SFP+ DWDM and industrial temperature ones. Other strengths lie in lower dissipation, faster delivery and maturer craft. Millions Linktel's xWDM transceivers have been shipped out running in Ethernet, Metro Networks, Wireless Networks and Transmission networks, their excellent performance won us a reputation as a world significant WDM transceiver's supplier. Looking forward to your inquiry, our WDM serial products will satisfy you.



10G Tunable SFP+ DWDM 80KM



Feature

- Electrical interface specifications per SFF-8431
- Management interface specifications per SFF-8431 and SFF-8472
- SFP+ MSA package with duplex LC connector
- 80KM MZM Tunable Transmitter
- Up to 11.3Gb/s bi-directional data links
- 50GHz ITU-based channel spacing(C-Band) with a wavelength locker
- Single +3.3V power supply
- Class 1 laser safety certified
- Operating temperature options: -5°C ~ +70°C
- Up to 80km on 9/125µm SMF
- RoHS Compliant

Application

- 80km 10Gb/s DWDM SONET/SDH
- 80km 10Gb/s DWDM Ethernet
- 80km 10Gb/s DWDM Fiber Channel

Products Selection

Part No	Form Factor	Data Rate(Gb/s)	Reach	Wavelength(mm)	Transmitter	Receiver	Interface	Temperature	Application
LX5901CDR	SFP+	9.953-11.32	80km	C-Band DWDM	MZ	APD	LC	0~70°C	10GBASE ZR

10G CWDM/DWDM SFP+



Feature

- Low power consumption
- Support no CDR and CDR option
- Commercial and Industrial operating temperature optional

Application

- 10G Ethernet
- Data Center
- CPRI and OBSAI

Products Selection

Part No	Form Factor	Data Rate(Gb/s)	Reach	Wavelength(mm)	Transmitter	Receiver	Interface	Temperature	Application
LX430xCDR	SFP+	10.3	20km	O/E-Band CWDM	DFB Laser	PIN	LC	0~70°C	10GBASE-LR/LW
LX432xCDR	SFP+	10.3	40km	O/E-Band CWDM	DFB Laser	PIN	LC	0~70°C	10GBASE-LR/LW
LX430xCDH	SFP+	10.3	20km	O/E-Band CWDM	DFB Laser	PIN	LC	0~70°C	10GBASE CWDM w/CDR
LX432xCDH	SFP+	10.3	40km	O/E-Band CWDM	DFB Laser	PIN	LC	0~70°C	10GBASE CWDM w/CDR
LX436xCDR	SFP+	10.3	10km	S/C/L-Band CWDM	DFB Laser	PIN	LC	0~70°C	10GBASE CWDM
LX431xCDR	SFP+	10.3	40km	S/C/L-Band CWDM	EML Laser	PIN	LC	0~70°C	10GBASE CWDM
LX431xIDR	SFP+	10.3	40km	S/C/L-Band CWDM	EML Laser	PIN	LC	-40~85°C	10GBASE CWDM
LX431xCDH	SFP+	10.3	40km	S/C/L-Band CWDM	EML Laser	PIN	LC	0~70°C	10GBASE CWDM w/CDR
LX431xIDH	SFP+	10.3	40km	S/C/L-Band CWDM	EML Laser	PIN	LC	-40~85°C	10GBASE CWDM w/CDR
LX435xCDR	SFP+	10.3	80km	S/C/L-Band CWDM	EML Laser	APD	LC	0~70°C	10GBASE CWDM
LX435xIDR	SFP+	10.3	80km	S/C/L-Band CWDM	EML Laser	APD	LC	-40~85°C	10GBASE CWDM
LX435xCDH	SFP+	10.3	80km	S/C/L-Band CWDM	EML Laser	APD	LC	0~70°C	10GBASE CWDM w/CDR
LX435xIDH	SFP+	10.3	80km	S/C/L-Band CWDM	EML Laser	APD	LC	-40~85°C	10GBASE CWDM w/CDR
LX41xxCDR	SFP+	10.3	40km	C-Band DWDM	EML Laser	PIN	LC	0~70°C	10GBASE DWDM
LX41xxIDR	SFP+	10.3	40km	C-Band DWDM	EML Laser	PIN	LC	-40~85°C	10GBASE DWDM
LX41xxCDH	SFP+	10.3	40km	C-Band DWDM	EML Laser	PIN	LC	0~70°C	10GBASE DWDM w/CDR
LX41xxIDH	SFP+	10.3	40km	C-Band DWDM	EML Laser	PIN	LC	-40~85°C	10GBASE DWDM w/CDR
LX41xxxCDR	SFP+	10.3	40km	C-Band DWDM	EML Laser	PIN	LC	0~70°C	50Ghz 10GBASE DWDM
LX41xxxCDH	SFP+	10.3	40km	C-Band DWDM	EML Laser	PIN	LC	0~70°C	50Ghz 10GBASE DWDM w/CDR
LX42xxCDR	SFP+	10.3	80km	C-Band DWDM	EML Laser	APD	LC	0~70°C	10GBASE DWDM
LX42xxIDR	SFP+	10.3	80km	C-Band DWDM	EML Laser	APD	LC	-40~85°C	10GBASE DWDM
LX42xxCDH	SFP+	10.3	80km	C-Band DWDM	EML Laser	APD	LC	0~70°C	10GBASE DWDM w/CDR
LX42xxIDH	SFP+	10.3	80km	C-Band DWDM	EML Laser	APD	LC	-40~85°C	10GBASE DWDM w/CDR
LX42xxxCDR	SFP+	10.3	80km	C-Band DWDM	EML Laser	APD	LC	0~70°C	50Ghz 10GBASE DWDM
LX42xxxCDH	SFP+	10.3	80km	C-Band DWDM	EML Laser	APD	LC	0~70°C	50Ghz 10GBASE DWDM w/CDR

WDM Transceivers (CWDM/DWDM)

Linktel Headquarters China

No.20 University Science Park Road, East-lake Hi-tech Development Zone, Wuhan, China
Tel:+86-27-59706329 Fax:+86-27-59706329 Email:sales@linkteltech.com

Linktel USA

1601 McCarthy Blvd #9, Milpitas, CA 95035, USA
Tel:+1 408 807 0482 Email:linktelus@linkteltech.com



Scan this code to access our WDM product's website for more details

10G CWDM/DWDM XFP



Feature

Support 8.5G and 10G CDR selectable
Support C-Band 50GHz or 100GHz ITU Grid for DWDM XFP
Commercial and Industrial operating temperature optional
Low power consumption

Application

SONET OC-192 and SDH STM-64
10G Ethernet
Storage networks

Products Selection

Part No	Form Factor	Data Rate(Gb/s)	Reach	Wavelength(mm)	Transmitter	Receiver	Interface	Temperature	Application
LX331xCDR	XFP	9.95~11.3	40km	S/C/L-Band CWDM	EML	PIN	LC	0~70°C	10GBASE-CWDM
LX331xIDR	XFP	9.95~11.3	40km	S/C/L-Band CWDM	EML	PIN	LC	-40~85°C	10GBASE-CWDM
LX31xxCDR	XFP	9.95~11.3	40km	C-Band DWDM	EML	PIN	LC	0~70°C	10GBASE-DWDM
LX31xxIDR	XFP	9.95~11.3	40km	C-Band DWDM	EML	PIN	LC	-40~85°C	10GBASE-DWDM
LX335xCDR	XFP	9.95~11.3	80km	S/C/L-Band CWDM	EML	APD	LC	0~70°C	10GBASE-CWDM
LX335xIDR	XFP	9.95~11.3	80km	S/C/L-Band CWDM	EML	APD	LC	-40~85°C	10GBASE-CWDM
LX32xxCDR	XFP	9.95~11.3	80km	C-Band DWDM	EML	APD	LC	0~70°C	10GBASE-DWDM
LX32xxIDR	XFP	9.95~11.3	80km	C-Band DWDM	EML	APD	LC	-40~85°C	10GBASE-DWDM

1G CWDM/DWDM SFP



Feature

Low power consumption
Maximum distance up to 120km
Commercial and Industrial operating temperature optional

Application

CWDM or DWDM networks
Ethernet

Products Selection

Part No.	Form Factor	Data Rate(Gb/s)	Reach	Wavelength(mm)	Transmitter	Receiver	Interface	Temperature	Application
LX150xCDF	SFP	0.155	40km	O/E-Band CWDM	DFB	PIN	LC	0~70°C	155M Base-CWDM
LX151xCDF	SFP	0.155	80km	O/E-Band CWDM	DFB	PIN	LC	0~70°C	155M Base-CWDM
LX152xCDF	SFP	0.155	40km	S/C/L-Band CWDM	DFB	PIN	LC	0~70°C	155M Base-CWDM
LX153xCDF	SFP	0.155	80km	S/C/L-Band CWDM	DFB	PIN	LC	0~70°C	155M Base-CWDM
LX154xCDF	SFP	0.155	120km	S/C/L-Band CWDM	DFB	PIN	LC	0~70°C	155M Base-CWDM
LX151xCDJ	SFP	0.622	80km	O/E-Band CWDM	DFB	PIN	LC	0~70°C	622M Base-CWDM
LX153xCDJ	SFP	0.622	80km	S/C/L-Band CWDM	DFB	PIN	LC	0~70°C	622M Base-CWDM
LX150xIDR	SFP	0.125~1.25	40km	O/E-Band CWDM	DFB	PIN	LC	-40~85°C	GE Base-CWDM
LX152xIDR	SFP	0.125~1.25	40km	S/C/L-Band CWDM	DFB	PIN	LC	-40~85°C	GE Base-CWDM
LX151xIDR	SFP	0.125~1.25	80km	O/E-Band CWDM	DFB	PIN	LC	-40~85°C	GE Base-CWDM
LX153xIDR	SFP	0.125~1.25	80km	S/C/L-Band CWDM	DFB	PIN	LC	-40~85°C	GE Base-CWDM
LX151xIDL	SFP	0.125~1.25	100km	O/E-Band CWDM	DFB	APD	LC	-40~85°C	GE Base-CWDM
LX154xIDR	SFP	0.125~1.25	120km	S/C/L-Band CWDM	DFB	APD	LC	-40~85°C	GE Base-CWDM
LX156xIDR	SFP	0.125~2.67	40km	O/E-Band CWDM	DFB	PIN	LC	-40~85°C	2.5G Base-CWDM
LX157xIDR	SFP	0.125~2.67	40km	S/C/L-Band CWDM	DFB	PIN	LC	-40~85°C	2.5G Base-CWDM
LX166xIDR	SFP	0.125~2.67	60km	O/E-Band CWDM	DFB	APD	LC	-40~85°C	2.5G Base-CWDM
LX158xIDR	SFP	0.125~2.67	80km	S/C/L-Band CWDM	DFB	APD	LC	-40~85°C	2.5G Base-CWDM
LX14xIDR	SFP	0.125~1.25	80km	C-Band DML DFB	DFB	PIN	LC	-40~85°C	GE C-band DWDM
LX13xIDR	SFP	0.125~1.25	120km	C-Band DML DFB	DFB	APD	LC	-40~85°C	GE C-band DWDM
LX17xIDS	SFP	0.125~2.67	40km	C-Band DML DFB	DFB	PIN	LC	-40~85°C	OC48 C-band DWDM
LX17xIDR	SFP	0.125~2.67	120km	C-Band DML DFB	DFB	APD	LC	-40~85°C	OC48 C-band DWDM

40G Optical Transceivers Family



Scan this code to access our 40G product's website for more details

Linktel Headquarters China

No.20 University Science Park Road, East-lake Hi-tech Development Zone, Wuhan, China
Tel:+86-27-59706329 Fax:+86-27-59706329 Email:sales@linkteltech.com

Linktel USA

1601 McCarthy Blvd #9, Milpitas, CA 95035, USA
Tel:+1 408 807 0482 Email:linktelus@linkteltech.com

40G AOC QSFP+ / QSFP+ to SFP+



Feature

- Wide and diverse customization
- Jacket color
- Cable length (up to 100m)
- Identification/Logo on cable
- Box package
- Temperature range
- Support DDM function
- Operating case temperature: 0 ~ 70°C

Application

- 40G Ethernet
- Data Center
- High Performance Computer
- Core Router

Products Selection

Part No.	Form Factor	Data Rate(Gb/s)	Reach*	Wavelength	Transmitter	Receiver	Temperature*	Application
LX4971CDR	QSFP+	41.2	1m	850nm	VCSEL	PIN	0~70°C	Datacenter, HPC, Core Routing
LX4972CDR	QSFP+	41.2	2m	850nm	VCSEL	PIN	0~70°C	Datacenter, HPC, Core Routing
LX4973CDR	QSFP+	41.2	3m	850nm	VCSEL	PIN	0~70°C	Datacenter, HPC, Core Routing
LX4974CDR	QSFP+	41.2	5m	850nm	VCSEL	PIN	0~70°C	Datacenter, HPC, Core Routing
LX4975CDR	QSFP+	41.2	10m	850nm	VCSEL	PIN	0~70°C	Datacenter, HPC, Core Routing
LX4976CDR	QSFP+	41.2	20m	850nm	VCSEL	PIN	0~70°C	Datacenter, HPC, Core Routing
LX4977CDR	QSFP+	41.2	30m	850nm	VCSEL	PIN	0~70°C	Datacenter, HPC, Core Routing
LX4978CDR	QSFP+	41.2	50m	850nm	VCSEL	PIN	0~70°C	Datacenter, HPC, Core Routing
LX4979CDR	QSFP+	41.2	100m	850nm	VCSEL	PIN	0~70°C	Datacenter, HPC, Core Routing
LX4981CDR	QSFP+ to 4x SFP+	4x10.3	1m	850nm	VCSEL	PIN	0~70°C	Datacenter, HPC, Core Routing
LX4982CDR	QSFP+ to 4x SFP+	4x10.3	2m	850nm	VCSEL	PIN	0~70°C	Datacenter, HPC, Core Routing
LX4983CDR	QSFP+ to 4x SFP+	4x10.3	3m	850nm	VCSEL	PIN	0~70°C	Datacenter, HPC, Core Routing
LX4984CDR	QSFP+ to 4x SFP+	4x10.3	5m	850nm	VCSEL	PIN	0~70°C	Datacenter, HPC, Core Routing
LX4985CDR	QSFP+ to 4x SFP+	4x10.3	10m	850nm	VCSEL	PIN	0~70°C	Datacenter, HPC, Core Routing
LX4986CDR	QSFP+ to 4x SFP+	4x10.3	20m	850nm	VCSEL	PIN	0~70°C	Datacenter, HPC, Core Routing
LX4987CDR	QSFP+ to 4x SFP+	4x10.3	30m	850nm	VCSEL	PIN	0~70°C	Datacenter, HPC, Core Routing
LX4988CDR	QSFP+ to 4x SFP+	4x10.3	50m	850nm	VCSEL	PIN	0~70°C	Datacenter, HPC, Core Routing
LX4989CDR	QSFP+ to 4x SFP+	4x10.3	100m	850nm	VCSEL	PIN	0~70°C	Datacenter, HPC, Core Routing

40G Optical Transceivers Family

The Linktel 40G QSFP+ series offer customers high-density and low-power 40 Gigabit Ethernet connectivity for the data center and enterprise. Our complete product line includes QSFP+ SR4, LR4, LR4 Lite, PSM4 series for applications. The 40G 1310nm QSFP+ transceiver is a full-duplex, photonic-integrated optical transceiver providing a high-speed link up to 43.02 Gbps over 10km and the 40G 850nm QSFP+ is a parallel photonic-integrated fiber transceiver that provides a signaling rate of 41.25 Gbps over 100 m of OM3 multimode fiber.

40G QSFP+ SR4



Feature

- 4 × 10.3G Electrical interface
- Distance up to 400m on OM4 MMF
- Operating case temperature: 0~70°C
- Single MPO connector receptacle
- Class 1 laser safety certified and RoHS Compliant

Application

- 40G Ethernet
- Data Center
- Switch and Router

Products Selection

Part No.	FormFactor	Data Rate(Gb/s)	Reach	Wavelength	Transmitter	Receiver	Interface	Temperature	Application
LX8001CDR	QSFP+	41.2	100m	850nm	VCSEL	PIN	MPO	0~70°C	40G BASE-SR4
LX8001CDL	QSFP+	41.2	300m	850nm	VCSEL	PIN	MPO	0~70°C	40G BASE-eSR4

40G QSFP+ LR4 / CWDM4



Feature

- Integrated 4-Channel WDM Mux/Demux for CWDM LR4
- Low power consumption
- Integrated 4 independent transmitter and receiver channels for PSM LR4

Application

- Data Center
- 40G Ethernet

Products Selection

Part No.	Form Factor	Data Rate(Gb/s)	Reach	Wavelength	Transmitter	Receiver	Interface	Temperature	Application
LX8002CDR	QSFP+	41.2	10km	1271nm 1291nm 1311nm 1331nm	DFB	PIN	LC	0~70°C	40G BASE-CWDM LR4
LX8002CSR	QSFP+	41.2	10km	1310nm	DFB	PIN	MPO	0~70°C	40G BASE-PSM LR4
LX8011CSR	QSFP+	41.2	2km	1310nm	DFB	PIN	MPO	0~70°C	40G BASE-PSM IR4
LX8011CDR	QSFP+	41.2	2km	1271nm 1291nm 1311nm 1331nm	DFB	PIN	LC	0~70°C	40G BASE-CWDM IR4

25G Optical Transceivers



Scan this code to access our 25G product's website for more details

Linktel Headquarters China

No.20 University Science Park Road, East-lake Hi-tech Development Zone, Wuhan, China
Tel:+86-27-59706329 Fax:+86-27-59706329 Email:sales@linkteltech.com

Linktel USA

1601 McCarthy Blvd #9, Milpitas, CA 95035, USA
Tel:+1 408 807 0482 Email:linktelus@linkteltech.com

25G AOC SFP28



Feature

- Wide and diverse customization
- Jacket color
- Cable length (up to 100m)
- Identification/Logo on cable
- Box package
- Temperature range
- Support DDM function
- Operating case temperature: 0 ~ 70°C

Application

- 25G Ethernet
- Data Center
- High Performance Computer
- Core Router

Products Selection

Part No.	Form Factor	Data Rate(Gb/s)	Reach*	Wavelength	Transmitter	Receiver	Temperature*	Application
LX5951CDR	SFP28	25.78	1m	850nm	VCSEL	PIN	0~70°C	Datacenter, HPC, Core Routing
LX5952CDR	SFP28	25.78	2m	850nm	VCSEL	PIN	0~70°C	Datacenter, HPC, Core Routing
LX5953CDR	SFP28	25.78	3m	850nm	VCSEL	PIN	0~70°C	Datacenter, HPC, Core Routing
LX5954CDR	SFP28	25.78	5m	850nm	VCSEL	PIN	0~70°C	Datacenter, HPC, Core Routing
LX5955CDR	SFP28	25.78	10m	850nm	VCSEL	PIN	0~70°C	Datacenter, HPC, Core Routing
LX5956CDR	SFP28	25.78	20m	850nm	VCSEL	PIN	0~70°C	Datacenter, HPC, Core Routing
LX5957CDR	SFP28	25.78	30m	850nm	VCSEL	PIN	0~70°C	Datacenter, HPC, Core Routing
LX5958CDR	SFP28	25.78	50m	850nm	VCSEL	PIN	0~70°C	Datacenter, HPC, Core Routing
LX5959CDR	SFP28	25.78	100m	850nm	VCSEL	PIN	0~70°C	Datacenter, HPC, Core Routing

25G Optical Transceivers

Linktel's 25G transceivers are for support rate up to 25 Gb/s optical interface connection. The product line includes 25G SFP28 SR and LR compliant to IEEE 802.3, SFF-8472 Rev 12.2, SFF-8402 and compatible with SFF-8432 and portions of SFF-8431 Rev. 4.1. The applications are for Data Centers, 5G Network, HPC, 25G Ethernet and Fiber Channel. Our 25G transceiver key advantages include: small size for improving port density, reliable connecting, and low power consumption.

25G SFP28 SR



Feature

- Low power consumption
- Distance up to 100m on OM4 MMF
- Operating case temperature: 0 ~ 70°C
- Duplex LC connector receptacle
- Class 1 laser safety certified and RoHS compliant

Application

- 25G Ethernet
- Data Center
- Switch and Router

Products Selection

Part No.	Form Factor	Data Rate(Gb/s)	Reach	Wavelength	Transmitter	Receiver	Interface	Temperature	Application
LX6501CDH	SFP28	25.78	100m	850nm	VCSEL	PIN	LC	0~70°C	25G BASE-SR

25G SFP28 LR



Feature

- Distance up to 10km on 9/125um SMF
- Low power consumption: less than 1.5W typically
- Commercial operating temperature
- Commercial and industrial operating temperature optional

Application

- High speed storage area networks
- 25G high speed interconnection

Products Selection

Part No.	Form Factor	Data Rate(Gb/s)	Reach	Wavelength	Transmitter	Receiver	Interface	Temperature	Application
LX6502CDH	SFP28	25.78	10km	1310nm	DFB	PIN	LC	0~70°C	25G BASE-LR
LX6502 IDH	SFP28	25.78	10km	1310nm	DFB	PIN	LC	-40~85°C	25G BASE-LR

10G Optical Transceivers Family (16G SFP+ included)

Linktel Headquarters China

No.20 University Science Park Road, East-lake Hi-tech Development Zone, Wuhan, China
Tel:+86-27-59706329 Fax:+86-27-59706329 Email:sales@linkteltech.com

Linktel USA

1601 McCarthy Blvd #9, Milpitas, CA 95035, USA
Tel:+1 408 807 0482 Email:linktelus@linkteltech.com

Linktel's 10G SFP+/XFP transceivers, including xWDM and 16G SFP+, cover wide various applications and distances: SR, LR Lite, LR, ER, ZR, BIDI (10km~60km), LTE 10G 1.4km 10km; CWDM LR, CWDM ER, CWDM 70km, DWDM ER, DWDM ZR for Data Centers, Metro Network, Wireless and Transmission network. They are compliant with IEEE802.3ae, SFF-8472 and SFF-8431. With strong relationships in supplying chain and stable quality, as two core advantages of us, nowadays Linktel's xWDM SFP+/XFP are attracting increasing customers all around the world.



Scan this code to access our 10G product's website for more details

Duplex SFP+



Feature

Low power consumption
Support no CDR and CDR option
Commercial and industrial operating temperature optional

Application

10G Ethernet
Data Center
CPRI and OBSAI

Products Selection

Part No.	Form Factor	Data Rate(Gb/s)	Reach	Wavelength	Transmitter	Receiver	Interface	Temperature	Application
LX4001IDR	SFP+	10.3	300m	850nm	VCSEL	PIN	LC	-40~85°C	10G BASE-SR w/o CDR
LX4002IDR	SFP+	10.3	10km	1310nm	DFB	PIN	LC	-40~85°C	10G BASE-LR w/o CDR
LX4003IDR	SFP+	10.3	40km	1550nm	EML	PIN	LC	-40~85°C	10G BASE-ER w/o CDR
LX4004IDR	SFP+	10.3	80km	1550nm	EML	APD	LC	-40~85°C	10G BASE-ZR w/o CDR
LX4001IDH	SFP+	9.95~11.3	300m	850nm	VCSEL	PIN	LC	-40~85°C	10G BASE-SR w CDR
LX4002IDH	SFP+	9.95~11.3	10km	1310nm	DFB	PIN	LC	-40~85°C	10G BASE-LR w CDR
LX4003IDH	SFP+	9.95~11.3	40km	1550nm	EML	PIN	LC	-40~85°C	10G BASE-ER w CDR
LX4004IDH	SFP+	9.95~11.3	80km	1550nm	EML	APD	LC	-40~85°C	10G BASE-ZR w CDR
LX4006CNR	Copper SFP+	10Gb/s	30m	--	--	--	RJ45	0~70°C	10GBASE-T

CWDM/DWDM SFP+



Feature

Low power consumption
Support no CDR and CDR option
Commercial and Industrial operating temperature optional

Application

10G Ethernet
Data Center
CPRI and OBSAI

Products Selection

Part No.	Form Factor	Data Rate(Gb/s)	Reach	Wavelength	Transmitter	Receiver	Interface	Temperature	Application
LX431xIDR	SFP+	10.3	40km	S/C/L-Band CWDM	CWDM EML	PIN	LC	-40~85°C	10G BASE CWDM w/o CDR
LX435xIDR	SFP+	10.3	80km	S/C/L-Band CWDM	CWDM EML	APD	LC	-40~85°C	10G BASE CWDM w/o CDR
LX41xxIDR	SFP+	10.3	40km	C-Band DWDM	C-Band DWDM EML	PIN	LC	-40~85°C	10G BASE DWDM w/o CDR
LX42xxIDR	SFP+	10.3	80km	C-Band DWDM	C-Band DWDM EML	APD	LC	-40~85°C	10G BASE DWDM w/o CDR
LX431xIDH	SFP+	9.95~11.3	40km	S/C/L-Band CWDM	CWDM EML	PIN	LC	-40~85°C	10G BASE CWDM w CDR
LX435xIDH	SFP+	9.95~11.3	80km	S/C/L-Band CWDM	CWDM EML	APD	LC	-40~85°C	10G BASE CWDM w CDR
LX41xxIDH	SFP+	9.95~11.3	40km	C-Band DWDM	C-Band DWDM EML	PIN	LC	-40~85°C	10G BASE DWDM w CDR
LX42xxIDH	SFP+	9.95~11.3	80km	C-Band DWDM	C-Band DWDM EML	APD	LC	-40~85°C	10G BASE DWDM w CDR

Bidi SFP+ **Feature** **Application**



Single Fiber Bi-Directional interface
 Support 1 to 11.3Gb/s bi-directional data links
 1270nm and 1330nm wavelengths combination
 Commercial and Industrial operating temperature optional

10G Ethernet
 Metro
 CPRI and OBSAI
 Data Centers

Products Selection

Part No.	Form Factor	Data Rate(Gb/s)	Reach	Wavelength	Transmitter	Receiver	Interface	Temperature	Application
LX4401IDR	Bidi SFP+	10.3	10km	1270nmTx/1330nmRx	DFB	PIN	Single LC	-40~85°C	10GBASE-BX
LX4402IDR	Bidi SFP+	10.3	10km	1330nmTx/1270nmRx	DFB	PIN	Single LC	-40~85°C	10GBASE-BX
LX4411IDR	Bidi SFP+	10.3	20km	1270nmTx/1330nmRx	DFB	PIN	Single LC	-40~85°C	10GBASE-BX
LX4412IDR	Bidi SFP+	10.3	20km	1330nmTx/1270nmRx	DFB	PIN	Single LC	-40~85°C	10GBASE-BX
LX4421IDR	Bidi SFP+	10.3	40km	1270nmTx/1330nmRx	DFB	PIN	Single LC	-40~85°C	10GBASE-BX
LX4422IDR	Bidi SFP+	10.3	40km	1330nmTx/1270nmRx	DFB	PIN	Single LC	-40~85°C	10GBASE-BX
LX4431IDR	Bidi SFP+	10.3	60km	1270nmTx/1330nmRx	DFB	APD	Single LC	-40~85°C	10GBASE-BX
LX4432IDR	Bidi SFP+	10.3	60km	1330nmTx/1270nmRx	DFB	APD	Single LC	-40~85°C	10GBASE-BX

Duplex XFP **Feature** **Application**



Low power consumption
 Support 8.5G and 10G CDR optional
 Commercial and Industrial operating temperature optional
 1550nm EML Transmitter for ER/ZR

10G Ethernet
 SONET OC-192 and SDH STM-64
 Storage networks

Products Selection

Part No.	Form Factor	Data Rate(Gb/s)	Reach	Wavelength	Transmitter	Receiver	Interface	Temperature	Application
LX3001IDR	XFP	9.95~11.3	300m	850nm	VCSEL	PIN	LC	-40~85°C	10G BASE-SR
LX3002IDR	XFP	9.95~11.3	10km	1310nm	DFB	PIN	LC	-40~85°C	10G BASE-LR
LX3003IDR	XFP	9.95~11.3	40km	1550nm	EML	PIN	LC	-40~85°C	10GBASE-ER
LX3004IDR	XFP	9.95~11.3	80km	1550nm	EML	APD	LC	-40~85°C	10GBASE-ZR

CWDM/DWDM XFP **Feature** **Application**



Support 8.5G and 10G CDR optional
 Support C-Band 50GHz or 100GHz ITU Grid for DWDM XFP
 Commercial and industrial operating temperature optional
 Low power consumption

SONET OC-192 and SDH STM-64
 10G Ethernet
 Storage networks

Products Selection

Part No.	Form Factor	Data Rate(Gb/s)	Reach	Wavelength	Transmitter	Receiver	Interface	Temperature	Application
LX331xCDR	XFP	9.95~11.3	40km	S/C/L-Band CWDM	EML	PIN	LC	0~70°C	10GBASE-CWDM
LX335xCDR	XFP	9.95~11.3	80km	S/C/L-Band CWDM	EML	APD	LC	0~70°C	10GBASE-CWDM
LX31xxCDR	XFP	9.95~11.3	40km	C-Band DWDM	EML	PIN	LC	0~70°C	10GBASE-DWDM
LX32xxCDR	XFP	9.95~11.3	80km	C-Band DWDM	EML	APD	LC	0~70°C	10GBASE-DWDM

16G SFP+ **Feature** **Application**



Low power consumption
 Up to 14.025Gb/s bi-directional data links

16G Fibre channel
 Data storage

Products Selection

Part No.	Form Factor	Data Rate(Gb/s)	Reach	Wavelength	Transmitter	Receiver	Interface	Temperature	Application
LX5501CDH	SFP+	14.025	100m	850nm	VCSEL	PIN	LC	0~70°C	16G FC SR/SW
LX5502CDH	SFP+	14.025	10km	1310nm	DFB	PIN	LC	0~70°C	16G FC LR/LW

SFP Transceivers Family (CSFP included)

Linktel Headquarters China

No.20 University Science Park Road, East-lake Hi-tech Development Zone, Wuhan, China
Tel:+86-27-59706329 Fax:+86-27-59706329 Email:sales@linkteltech.com

Linktel USA

1601 McCarthy Blvd #9, Milpitas, CA 95035, USA
Tel:+1 408 807 0482 Email:linktelus@linkteltech.com



Scan this code to access our SFP product's website for more details

Duplex/Bidi/Copper SFP (CSFP included)



Feature

Digital Diagnostic Monitoring available
Data rate range from 100Mb/s to 4.25Gb/s
Maximum distance up to 120km
Commercial and industrial operating temperature optional

Application

FE or GE Ethernet
Fiber Channel
BBU and RRU

Products Selection

Part No.	Form Factor	Data Rate(Gb/s)	Reach	Wavelength	Transmitter	Receiver	Interface	Temperature	Application
LX1021IDR	SFP	1.25	550m	850nm	VCSEL	PIN	LC	-40~85°C	GE SX, 1× FC
LX1022IDR	SFP	1.25	10km	1310nm	FP	PIN	LC	-40~85°C	GE LX, 1× FC
LX1022IDS	SFP	1.25	20km	1310nm	FP	PIN	LC	-40~85°C	GE LX, 1× FC
LX1023IDR	SFP	1.25	40km	1310nm	DFB	PIN	LC	-40~85°C	GE EX, 1× FC
LX1023IDL	SFP	1.25	40km	1550nm	DFB	PIN	LC	-40~85°C	GE EX, 1× FC
LX1024IDR	SFP	1.25	80km	1550nm	DFB	PIN	LC	-40~85°C	GE ZX, 1× FC
LX1025IDR	SFP	1.25	120km	1550nm	DFB	APD	LC	-40~85°C	GE EZX, 1× FC
LX1031IDR	SFP	2.67	300m	1310nm	VCSEL	PIN	LC	-40~85°C	SDH I16
LX1032IDR	SFP	2.67	2km	1310nm	FP	PIN	LC	-40~85°C	SDH I16
LX1033IDR	SFP	2.67	15km	1310nm	DFB	PIN	LC	-40~85°C	SDH S16.1
LX1034IDR	SFP	2.67	40km	1310nm	DFB	PIN	LC	-40~85°C	SDH L16.1
LX1034IDL	SFP	2.67	40km	1550nm	DFB	PIN	LC	-40~85°C	SDH L16.1
LX1035IDR	SFP	2.67	80km	1550nm	DFB	APD	LC	-40~85°C	SDH L16.2
LX1036CDR	SFP	2.67	120km	1550nm	DFB	APD	LC	0~70°C	SDH L16.2
LX1041CDR	SFP	4.25	150m	850nm	VCSEL	PIN	LC	0~70°C	4× FC
LX1042CDR	SFP	4.25	10km	1310nm	DFB	PIN	LC	0~70°C	4× FC
LX1042CDL	SFP	4.25	20km	1310nm	DFB	PIN	LC	0~70°C	4× FC
LX1043CDR	SFP	4.25	40km	1550nm	DFB	PIN	LC	0~70°C	4× FC
LX1044CDR	SFP	4.25	80km	1550nm	DFB	APD	LC	0~70°C	4× FC
LX2001IDR	Bidi SFP	0.155	15km	1310nmTx/1550nmRx	FP	PIN	LC	-40~85°C	100Base-BX
LX2011IDR	Bidi SFP	0.155	15km	1550nmTx/1310nmRx	FP	PIN	LC	-40~85°C	100Base-BX
LX2102IDR	Bidi SFP	1.25	20km	1310nmTx/1490nmRx	FP	PIN	LC	-40~85°C	1000Base-BX
LX2122IDR	Bidi SFP	1.25	20km	1490nmTx/1310nmRx	DFB	PIN	LC	-40~85°C	1000Base-BX
LX2103IDR	Bidi SFP	1.25	40km	1310nmTx/1490nmRx	DFB	PIN	LC	-40~85°C	1000Base-BX
LX2123IDR	Bidi SFP	1.25	40km	1490nmTx/1310nmRx	DFB	PIN	LC	-40~85°C	1000Base-BX
LX2105IDR	Bidi SFP	1.25	80km	1310nmTx/1490nmRx	DFB	PIN	LC	-40~85°C	1000Base-BX
LX2125IDR	Bidi SFP	1.25	80km	1490nmTx/1310nmRx	DFB	PIN	LC	-40~85°C	1000Base-BX
LX2302IDR	Bidi SFP	2.67	20km	1310nmTx/1550nmRx	DFB	PIN	LC	-40~85°C	STM-16/OC48
LX2312IDR	Bidi SFP	2.67	20km	1550nmTx/1310nmRx	DFB	PIN	LC	-40~85°C	STM-16/OC48
LX2304IDR	Bidi SFP	2.67	40km	1490nmTx/1550nmRx	DFB	PIN	LC	-40~85°C	STM-16/OC48
LX2314IDR	Bidi SFP	2.67	40km	1550nmTx/1490nmRx	DFB	PIN	LC	-40~85°C	STM-16/OC48
LX2501IDR	CSFP	1.25	20km	1310nmTx/1490nmRx	FP	PIN	LC	-40~85°C	1000Base-BX
LX2502IDR	CSFP	1.25	20km	1490nmTx/1310nmRx	DFB	PIN	LC	-40~85°C	1000Base-BX
LX2504IDR	CSFP	1.25	40km	1310nmTx/1490nmRx	DFB	PIN	LC	-40~85°C	1000Base-BX
LX2505IDR	CSFP	1.25	40km	1490nmTx/1310nmRx	DFB	PIN	LC	-40~85°C	1000Base-BX
LX1801CNR	Copper SFP	10/100/1000M	100m				RJ45	0~70°C	1000Base-T
LX1801CNL	Copper SFP	1000M	100m				RJ45	0~70°C	1000Base-T

SFP Transceivers Family (CSFP included)

Linktel SFP Transceivers Family has a wide portfolio with various applications on SONET/SDH, xWDM, Ethernet, Metro Network, Wireless Network and Transmission network. They support rates from 125M~4.25G bps. Form Factors are Duplex and Bidi. All transceivers specifications and features are fully compliant with SFP MSA. Our xWDM SFP has two core advantages: strong relationships in supplying chain and very stable quality performance, this is attracting more worldwide customers to use.

CWDM/DWDM SFP



Feature

Low power consumption
 Maximum distance up to 120km
 Commercial and industrial operating temperature optional

Application

CWDM or DWDM networks
 Ethernet

Products Selection

Part No.	Form Factor	Data Rate(Gb/s)	Reach	Wavelength	Transmitter	Receiver	Interface	Temperature	Application
LX150xIDR	SFP	1.25	40km	O/E-Band CWDM	DFB	PIN	LC	-40~85°C	O/E-Band CWDM
LX152xIDR	SFP	1.25	40km	S/C/L-Band CWDM	DFB	PIN	LC	-40~85°C	S/C/L-Band CWDM
LX151xIDR	SFP	1.25	80km	O/E-Band CWDM	DFB	PIN	LC	-40~85°C	O/E-Band CWDM
LX153xIDR	SFP	1.25	80km	S/C/L-Band CWDM	DFB	PIN	LC	-40~85°C	S/C/L-Band CWDM
LX151xIDL	SFP	1.25	100km	O/E-Band CWDM	DFB	APD	LC	-40~85°C	O/E-Band CWDM
LX154xIDR	SFP	1.25	120km	S/C/L-Band CWDM	DFB	APD	LC	-40~85°C	S/C/L-Band CWDM
LX156xIDR	SFP	2.67	40km	O/E-Band CWDM	DFB	PIN	LC	-40~85°C	O/E-Band CWDM
LX157xIDR	SFP	2.67	40km	S/C/L-Band CWDM	DFB	PIN	LC	-40~85°C	S/C/L-Band CWDM
LX158xIDR	SFP	2.67	80km	O/E-Band CWDM	DFB	APD	LC	-40~85°C	O/E-Band CWDM
LX158xLDR	SFP	2.67	120km	S/C/L-Band CWDM	DFB	APD	LC	-40~85°C	S/C/L-Band CWDM
LX14xxIDR	SFP	1.25	80km	C-Band DML DFB	DFB	PIN	LC	-40~85°C	GE C-band DWDM
LX13xxIDR	SFP	1.25	120km	C-Band DML DFB	DFB	APD	LC	-40~85°C	GE C-band DWDM
LX17xxIDS	SFP	2.67	40km	C-Band DML DFB	DFB	PIN	LC	-40~85°C	OC48 C-band DWDM
LX17xxIDR	SFP	2.67	120km	C-Band DML DFB	DFB	APD	LC	-40~85°C	OC48 C-band DWDM

AOC (Active Optical Cable)

AOC is widely used in Data Centers, HPC and Routing to accelerate data connectivity for storage, networking, and computing. AOC is composed of optical transceivers in both ends with multimode fiber cable and removes the complicated optical fiber interface, therefore it brings friendly and intuition to users making transceivers earlier to use and less maintenance. In addition, Linktel offers full AOC products line including SFP+, QSFP+, QSFP+ breakout, SFP28, QSFP28, QSFP28 breakout and CXP, providing in-depth and flexible wide customizations such as length, operation temperature, fiber jacket color and smart tracking function etc.

10G SFP+ AOC



Linktel AOC Family Features & Applications

Feature	Application
Wide and diverse customizing	10G 25G 40G 100G Ethernet
- Fiber Jacket color	Data Center
- Cable length (up to 100m)	InfiniBand 12xQDR/FDR
- Identification/Logo on cable	Fibre Channel
- Box package	SAS/SATA
- Temperature range	PCIe
Support DDM function	
Reliable VCSEL and PIN photonic devices	
Commercial and Industrial operating temperature optional	

Products Selection

Part No.	Form Factor	Data Rate(Gb/s)	Reach	Wavelength	Transmitter	Receiver	Temperature	Application
LX495xCDR	SFP+	10.3	1m,2m,3m,5m,10m, 20m,30m,50m,100m	850	VCSEL	PIN	0~70°C	Datacenter, HPC, Core Routing
LX495xxDx	SFP+	10.3	Other distances except above*	850	VCSEL	PIN	Other ranges °C*	Datacenter, HPC, Core Routing

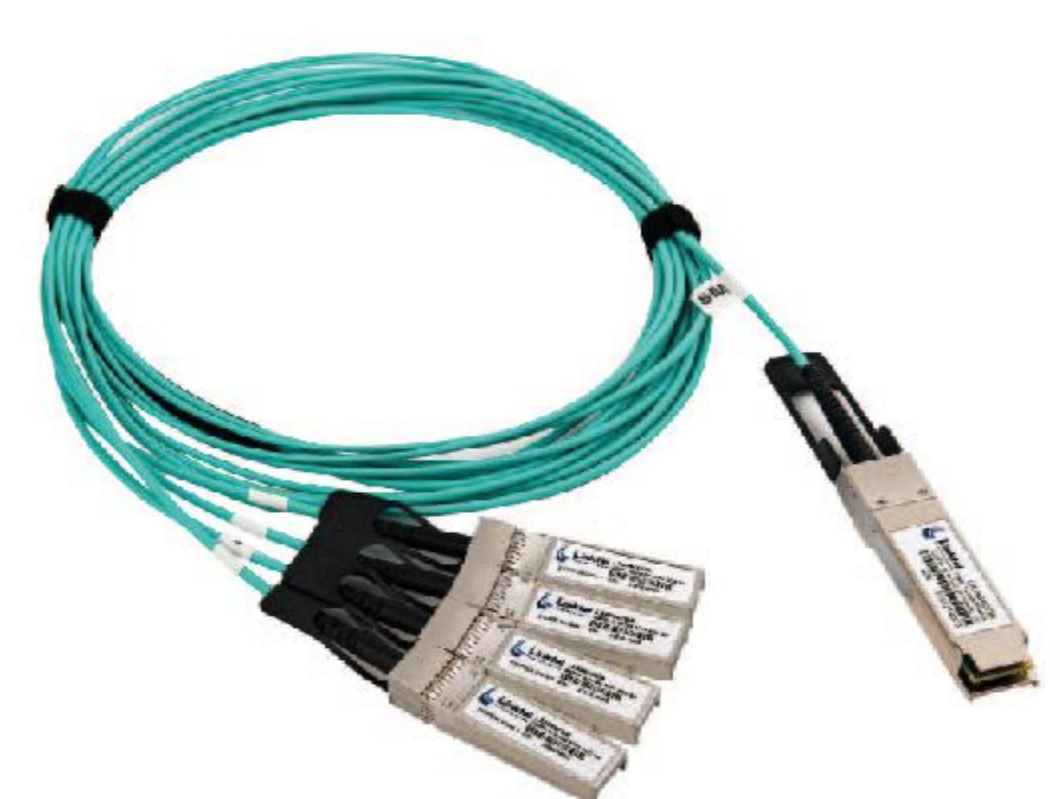
100G QSFP28 AOC (inc. Breakout)



25G SFP28 AOC



40G QSFP+ AOC (inc. Breakout)



AOC (Active Optical Cable)



Scan this code to access our AOC product's website for more details

Linktel Headquarters China

No.20 University Science Park Road, East-lake Hi-tech Development Zone, Wuhan, China
Tel:+86-27-59706329 Fax:+86-27-59706329 Email:sales@linkteltech.com

Linktel USA

1601 McCarthy Blvd #9, Milpitas, CA 95035, USA
Tel:+1 408 807 0482 Email:linktelus@linkteltech.com

100G QSFP28 AOC (inc. Breakout)

Products Selection

Part No.	Form Factor	Data Rate(Gb/s)	Reach	Wavelength	Transmitter	Receiver	Temperature	Application
LX597xCDR	QSFP28	103.1	1m,2m,3m,5m,10m,20m,30m,50m,100m	850nm	VCSEL	PIN	0~70°C	Datacenter, HPC, Core Routing
LX597xxDx	QSFP28	103.1	Other distances except above*	850nm	VCSEL	PIN	Other ranges °C*	Datacenter, HPC, Core Routing
LX598xCDR	QSFP28 to 4x SFP28	4x25.78	1m,2m,3m,5m,10m,20m,30m,50m,100m	850nm	VCSEL	PIN	0~70°C	Datacenter, HPC, Core Routing
LX598xxDx	QSFP28 to 4x SFP28	4x25.78	Other distances except above*	850nm	VCSEL	PIN	Other ranges °C*	Datacenter, HPC, Core Routing

25G SFP28 AOC

Products Selection

Part No.	Form Factor	Data Rate(Gb/s)	Reach	Wavelength	Transmitter	Receiver	Temperature	Application
LX595xCDR	SFP28	25.78	1m,2m,3m,5m,10m,20m,30m,50m,100m	850nm	VCSEL	PIN	0~70°C	Datacenter, HPC, Core Routing
LX595xxDx	SFP28	25.78	Other distances except above*	850nm	VCSEL	PIN	Other ranges °C*	Datacenter, HPC, Core Routing

40G QSFP+ AOC (inc. Breakout)

Products Selection

Part No.	Form Factor	Data Rate(Gb/s)	Reach	Wavelength	Transmitter	Receiver	Temperature	Application
LX497xCDR	QSFP+	41.2	1m,2m,3m,5m,10m,20m,30m,50m,100m	850nm	VCSEL	PIN	0~70°C	Datacenter, HPC, Core Routing
LX497xxDx	QSFP+	41.2	Other distances except above*	850nm	VCSEL	PIN	Other ranges °C*	Datacenter, HPC, Core Routing
LX498xCDR	QSFP+ to 4x SFP+	4x10.3	1m,2m,3m,5m,10m,20m,30m,50m,100m	850nm	VCSEL	PIN	0~70°C	Datacenter, HPC, Core Routing
LX498xxDx	QSFP+ to 4x SFP+	4x10.3	Other distances except above*	850nm	VCSEL	PIN	Other ranges °C*	Datacenter, HPC, Core Routing